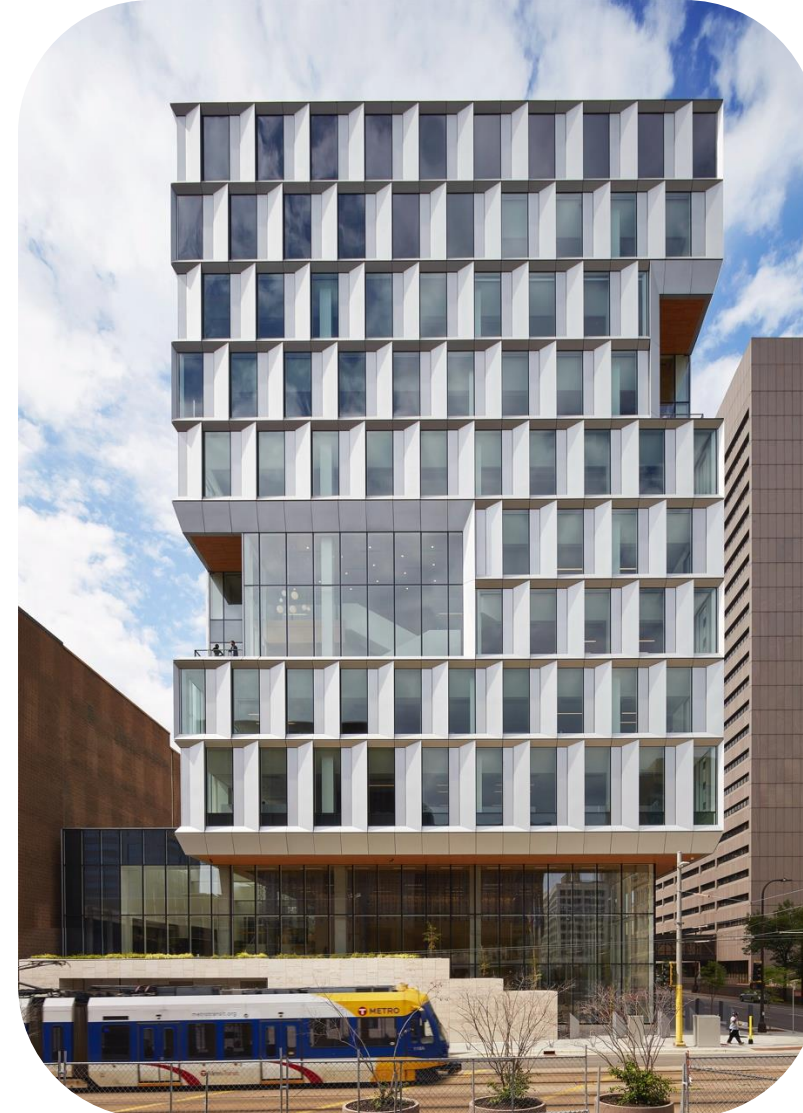
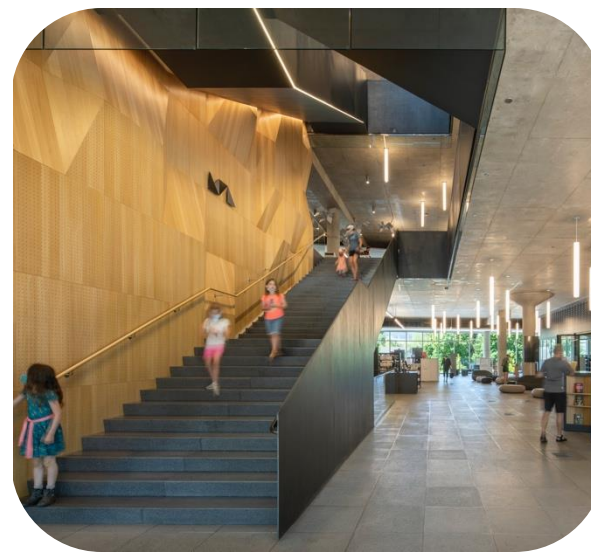
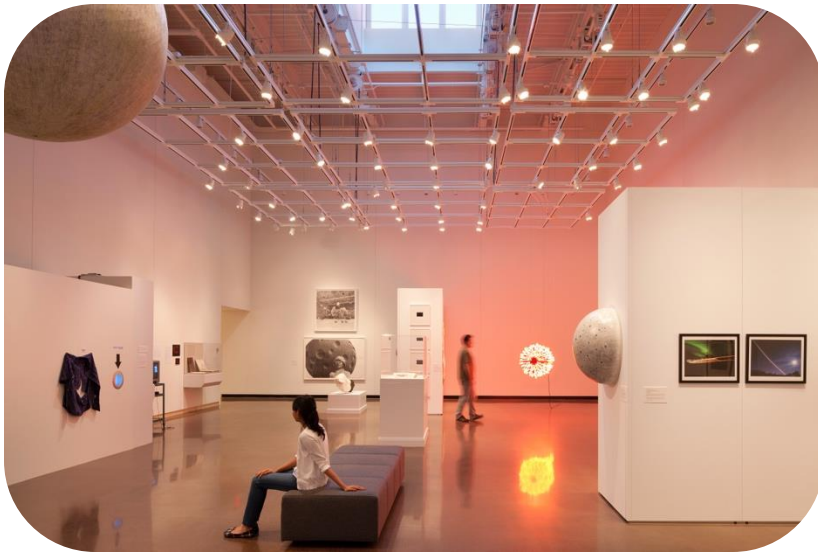


Libraries for a greener future:

the
built
environment's
role

MSRDesign



the opportunity | amplified ripple effect



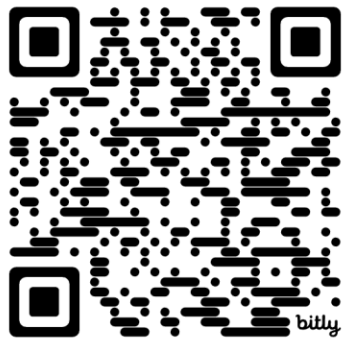
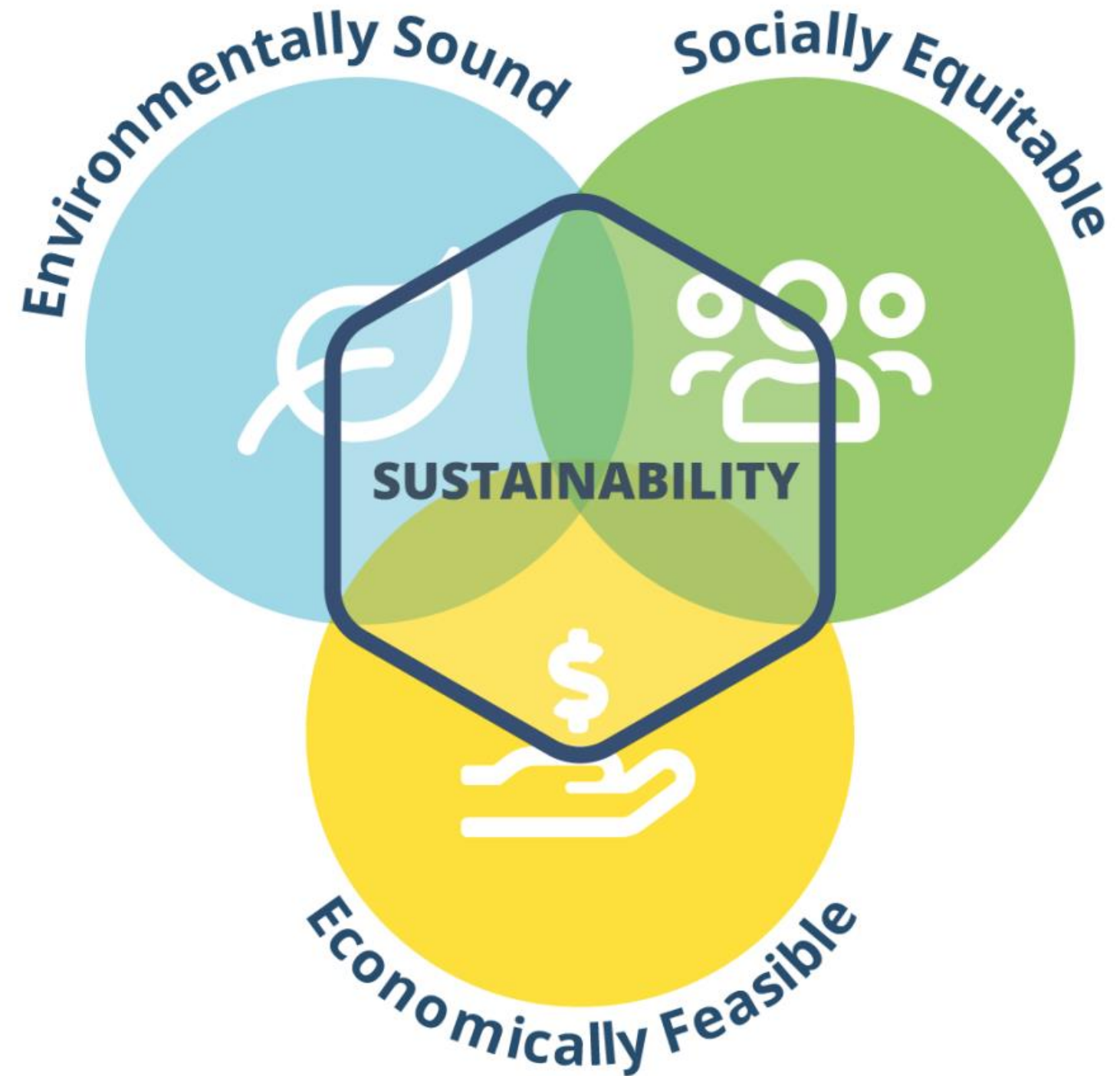
the opportunity | amplified ripple effect



staff
educators
students
general public
corporate decision-makers
leaders + future leaders
policy makers
advocacy groups
...



if sustainability is...



then sustainable **design** is...



ENERGY



WATER



ECOSYSTEMS



RESOURCES



EQUITABLE COMMUNITIES



WELL-BEING



INTEGRATION



ECONOMY



CHANGE



DISCOVERY

building
+ site

people

context
+ future



libraries modeling the way | 5 examples

designing for  **ENERGY** by reducing energy and emissions in heating and cooling

designing for  **ECOSYSTEMS** by restoring ravaged landscape to diverse biome

designing for  **RESOURCES** by reducing carbon footprint while honoring history

designing for  **WELL-BEING** by supporting neurodiversity

designing for  **DISCOVERY** by inspiring delight while fostering stewardship



designing for energy | L.E. Phillips Memorial Public Library (Wisconsin)



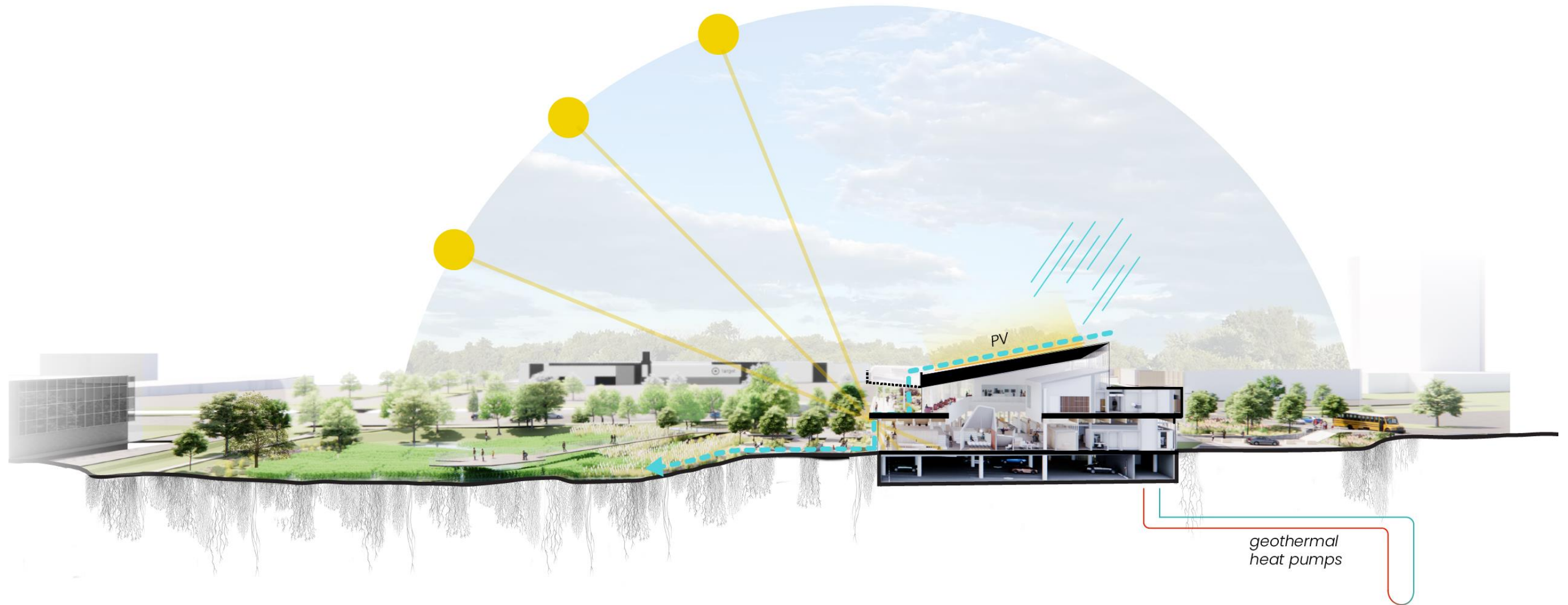
geothermal combined with electrification (i.e., no gas)

80% reduction in energy use from national baseline



ENERGY | reducing energy + emissions from heating and cooling

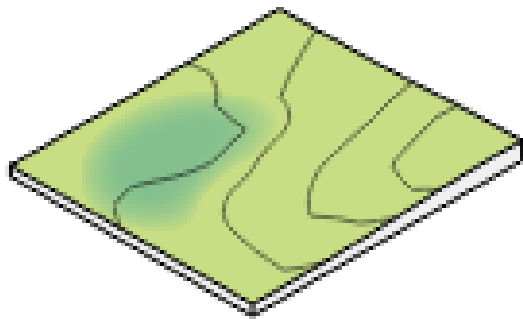
designing for ecosystems | Southdale Library (Minnesota)



ECOSYSTEMS | restoring a ravaged landscape to a diverse biome

designing for ecosystems | restoring to regional biomes

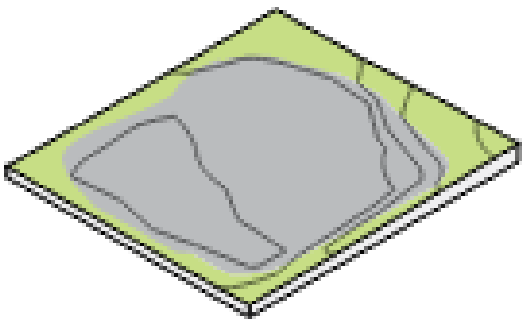
past



predevelopment



oak savannah

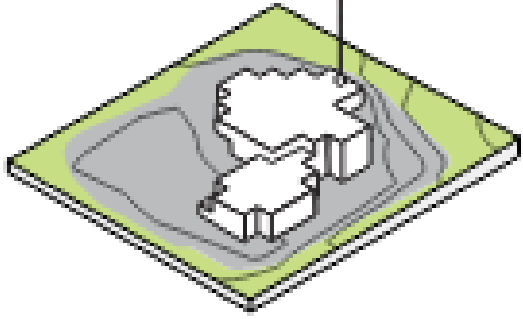


extraction



gravel pit

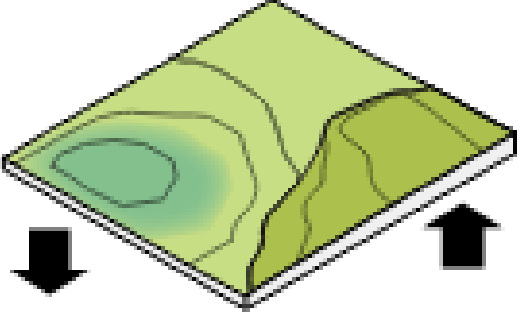
current



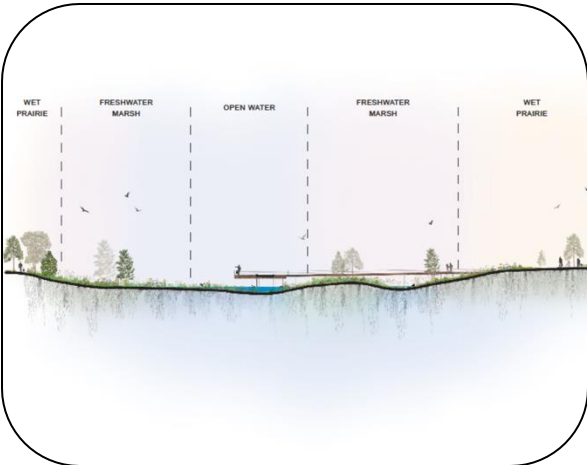
library + parking



current library

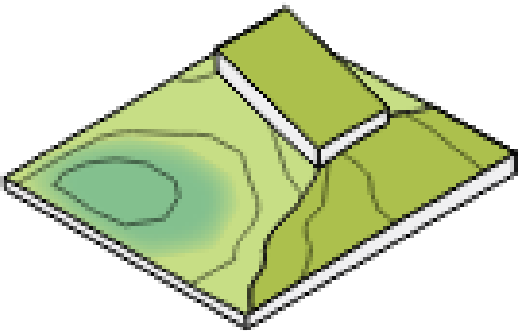


restoration



restore site

future



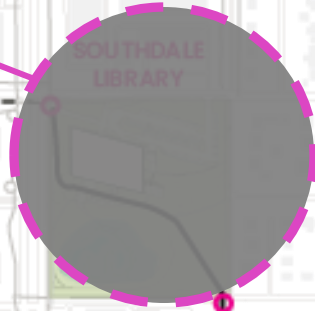
revitalization



regional biomes



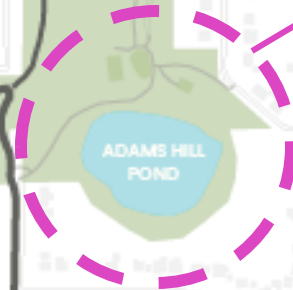
existing building + site



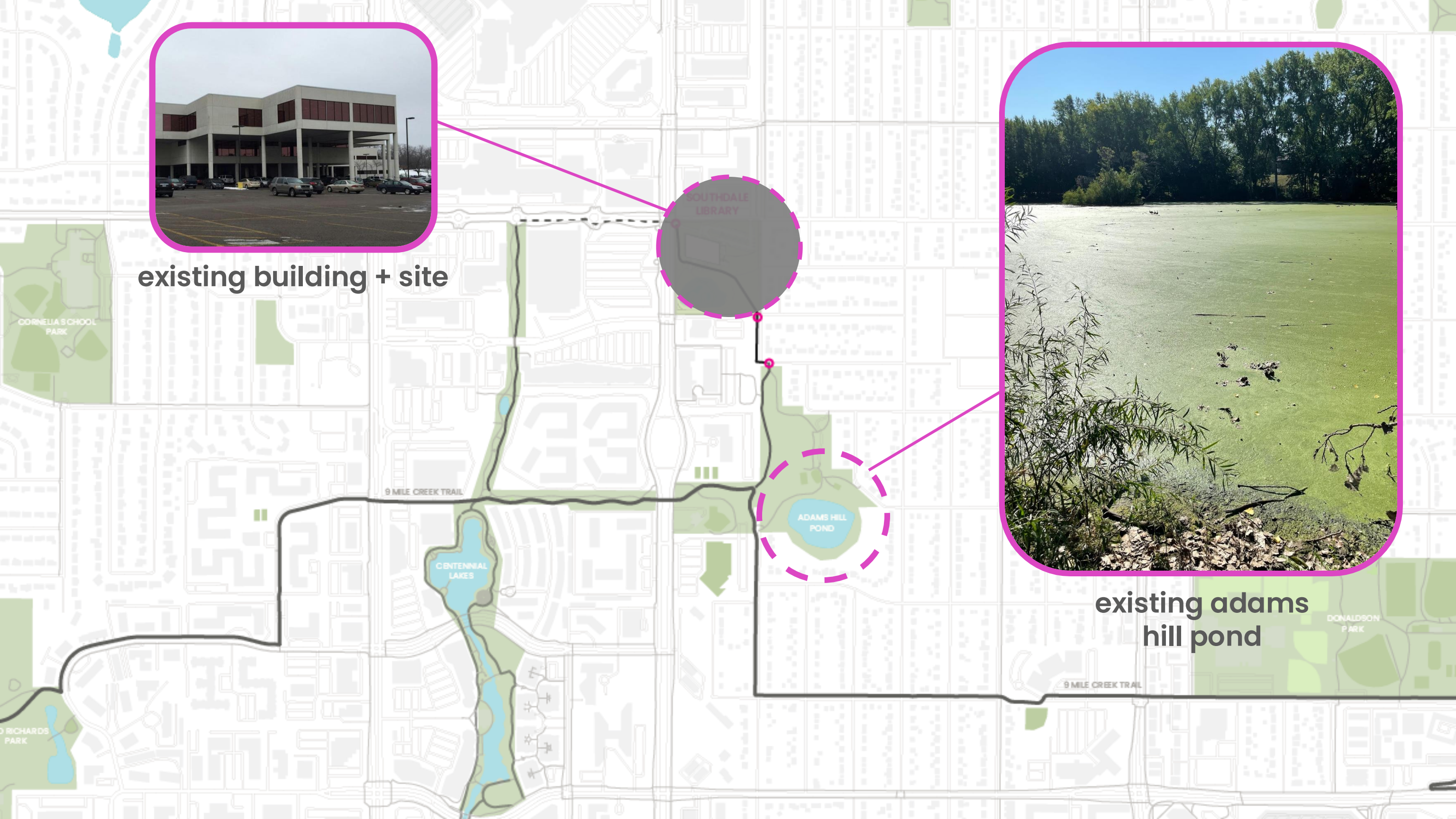
**SOUTHDALE
LIBRARY**



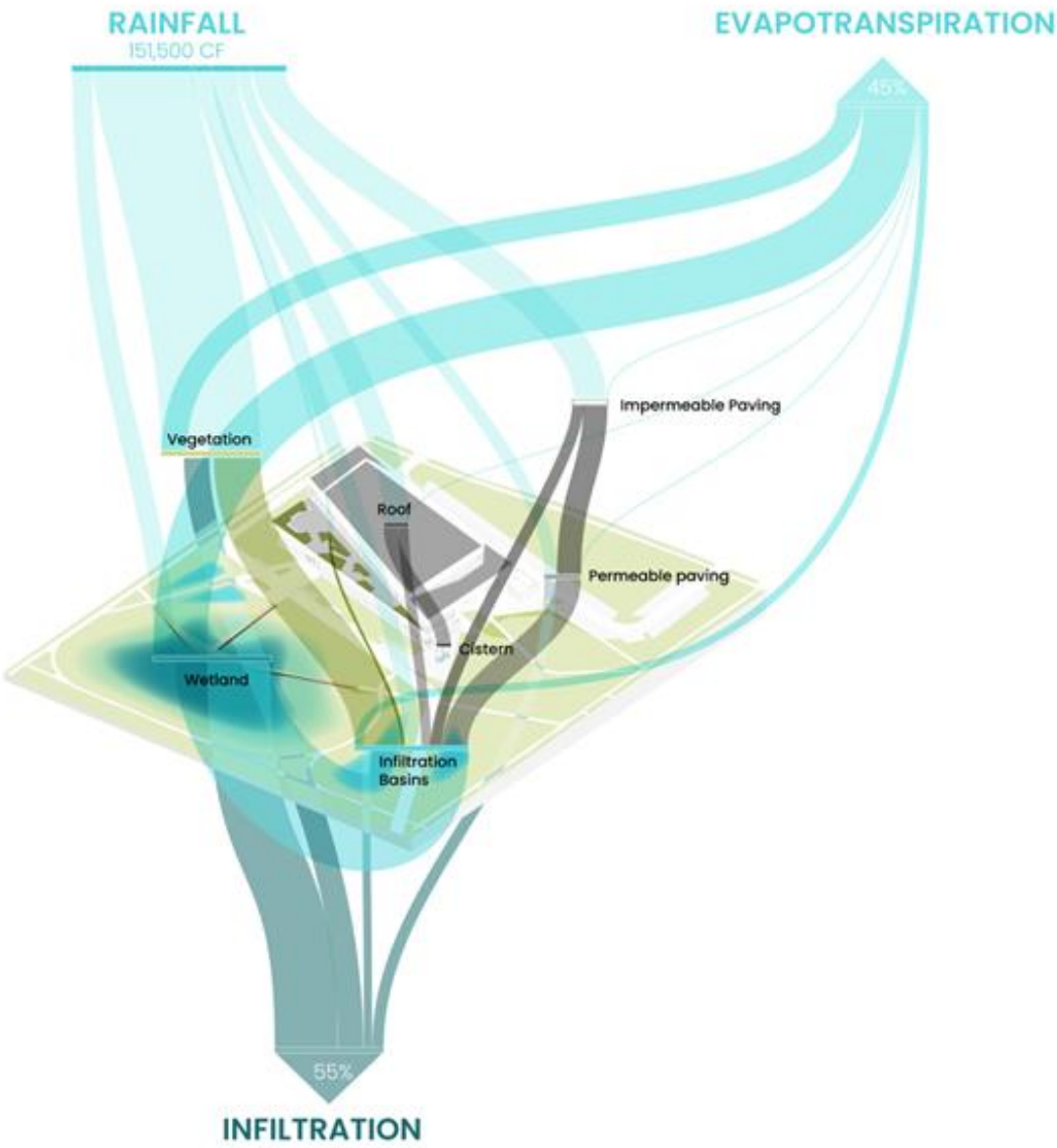
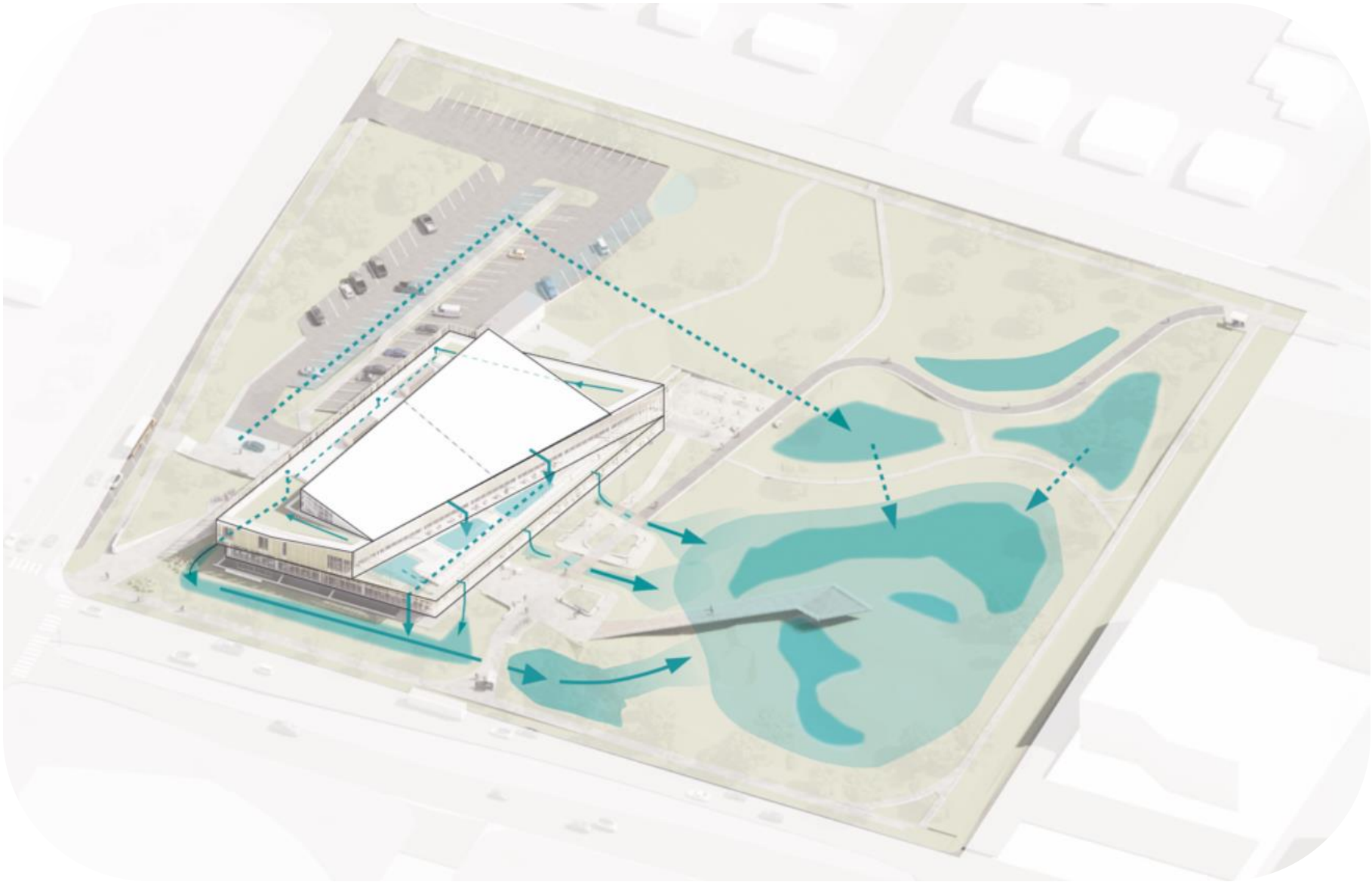
**existing adams
hill pond**



**ADAMS HILL
POND**

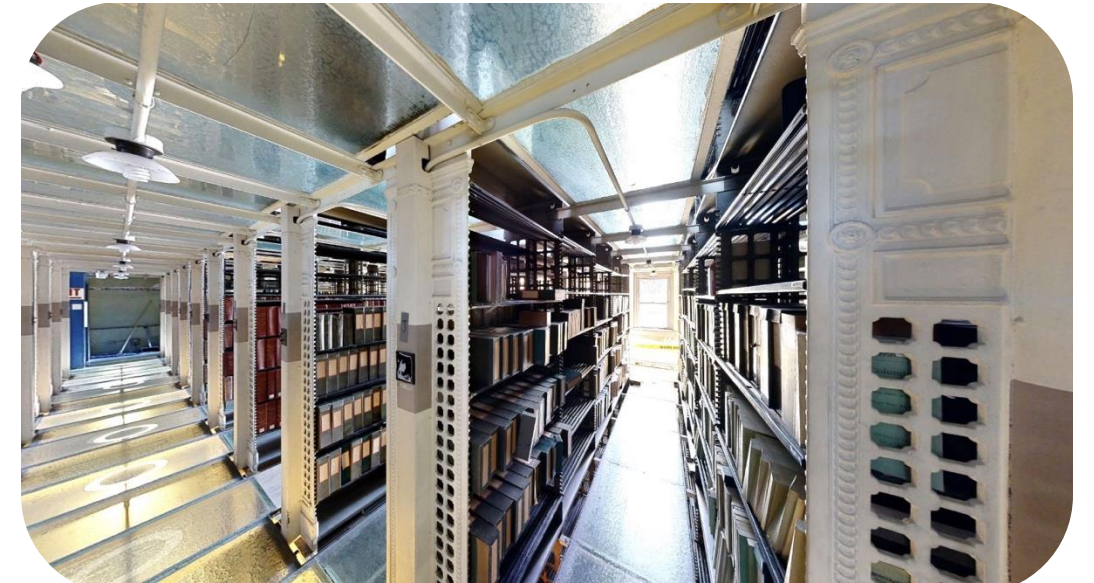


designing for ecosystems | restoring to regional biomes





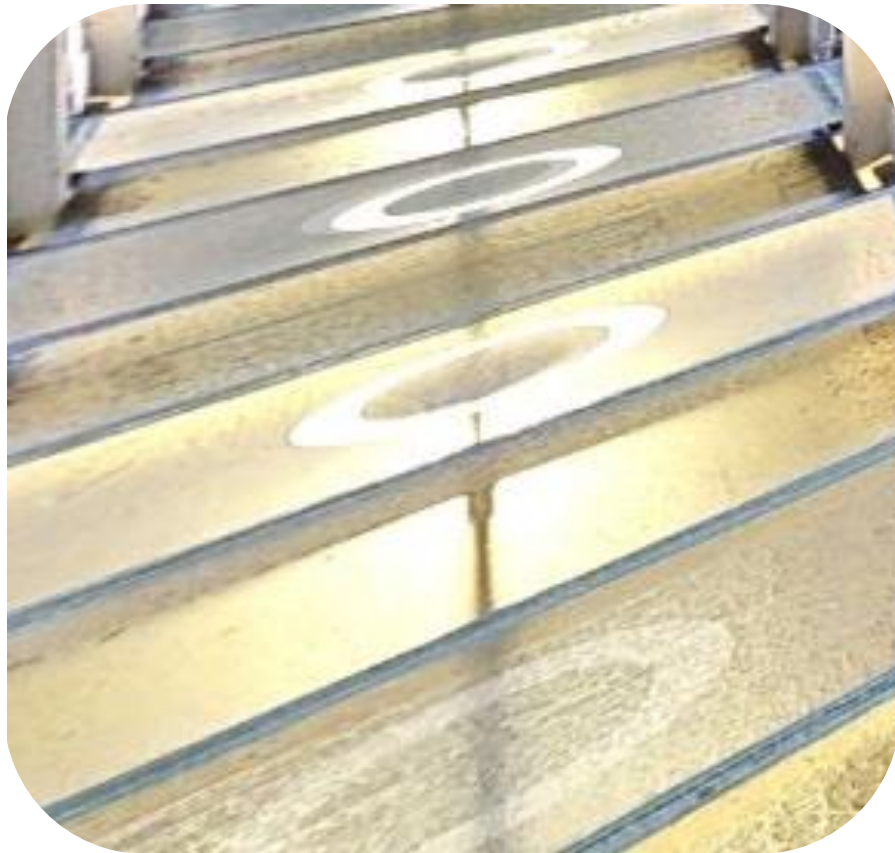
designing for resources | Louisville Free Library's Central Library (Kentucky)



RESOURCES | reducing carbon footprint while honoring history

designing for resources | process

test sample of
terrazzo
(made from
existing glass floor)



flooring

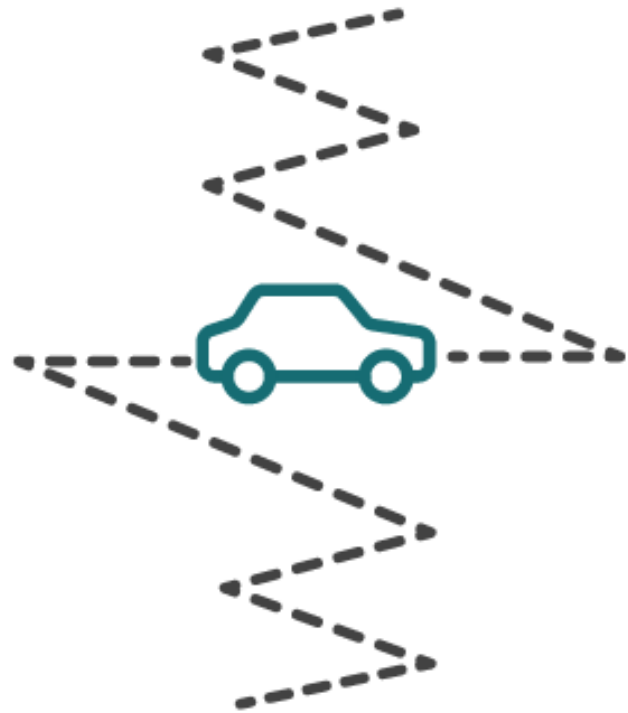


wall panels



ceiling panels

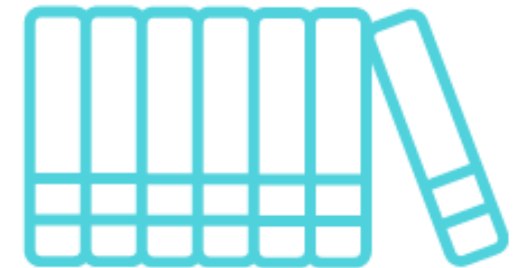
designing for resources | offsetting emissions—equivalencies



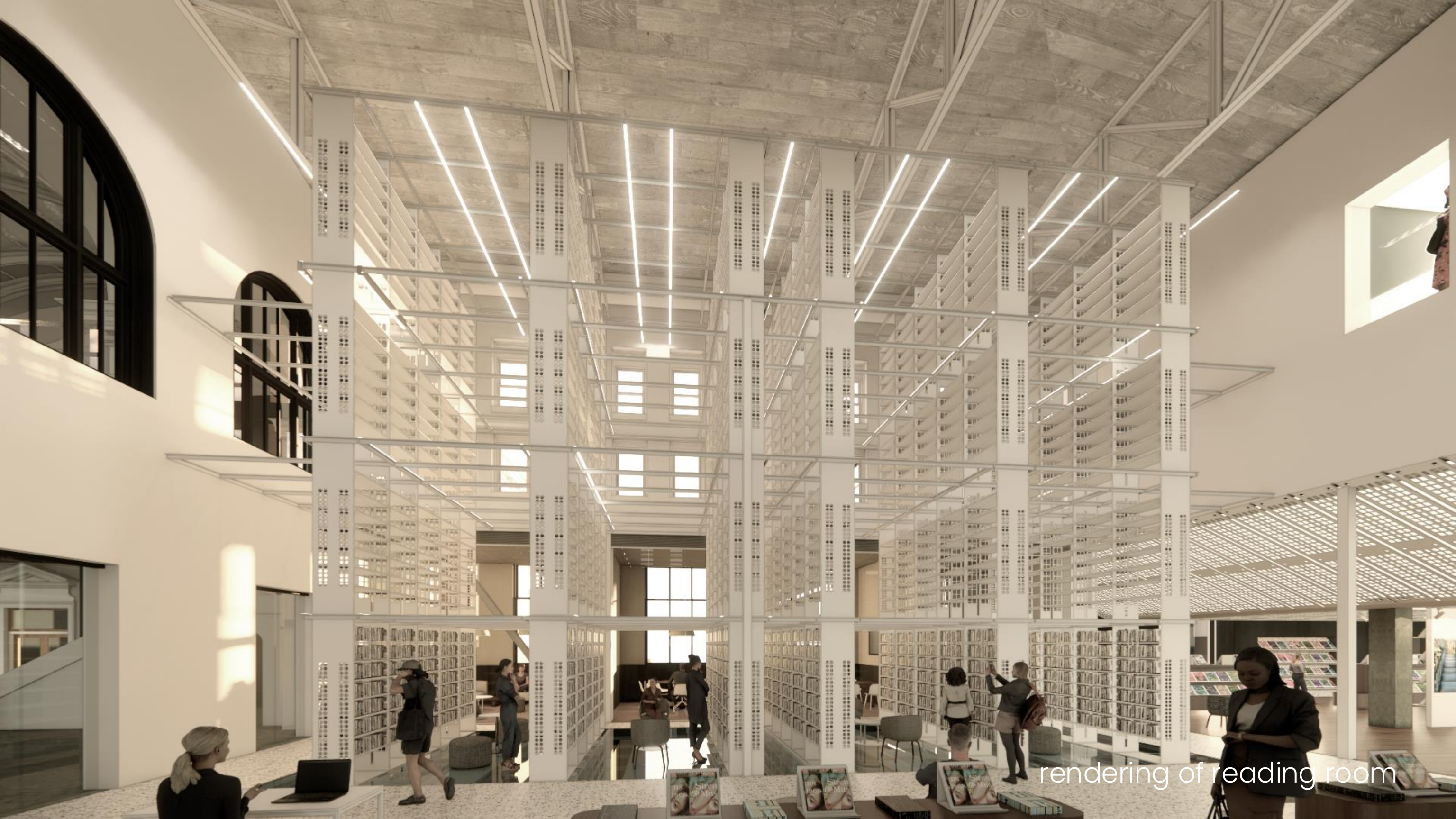
1.3 million miles driven in a
gas-powered car



the carbon sequestered
in a 596-acre forest



1.25x carbon embodied in a
recent 12,000 SF library building



rendering of reading room



rendering of gallery

designing for well-being | Meridian Library's Orchard Park Branch (Idaho)



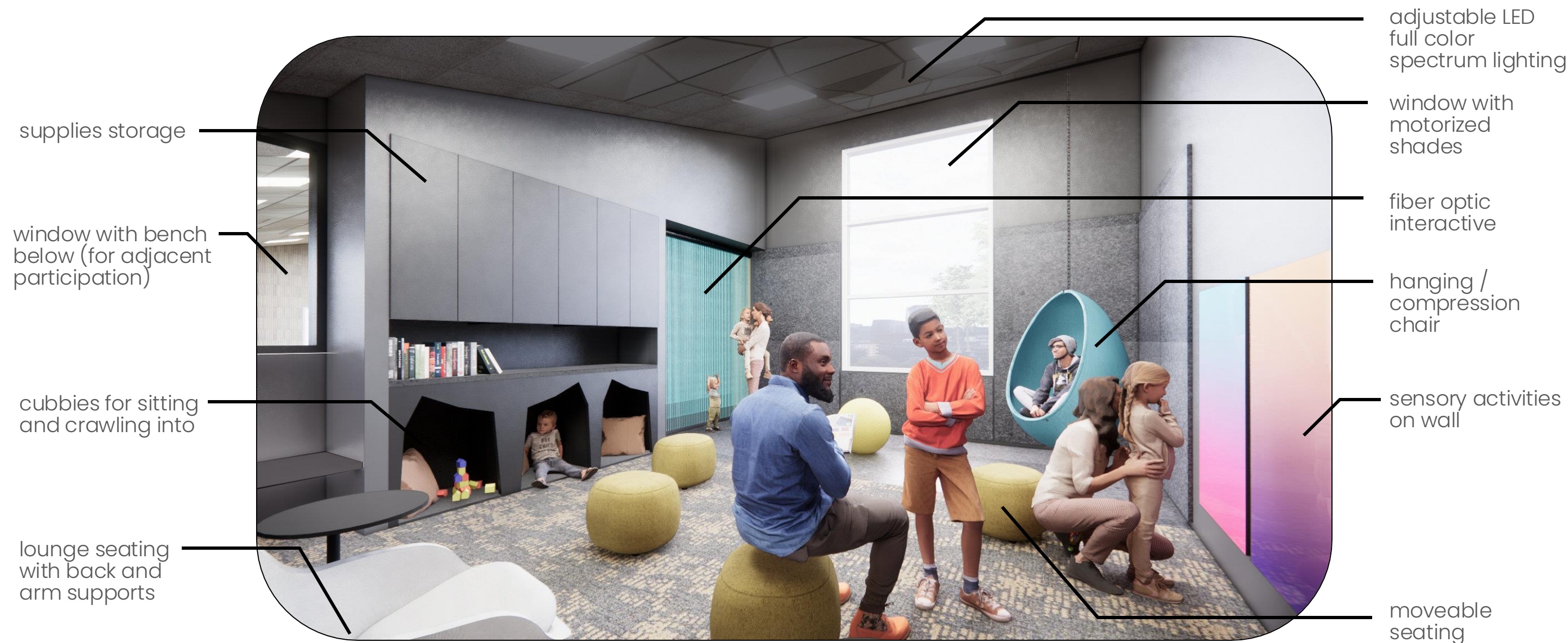
we all have different needs
stimulation vs calm
bright vs dark
open vs cozy
active vs quiet

...



WELL-BEING | supporting neurodiversity

designing for well-being | Meridian Library's Orchard Park Branch (Idaho)



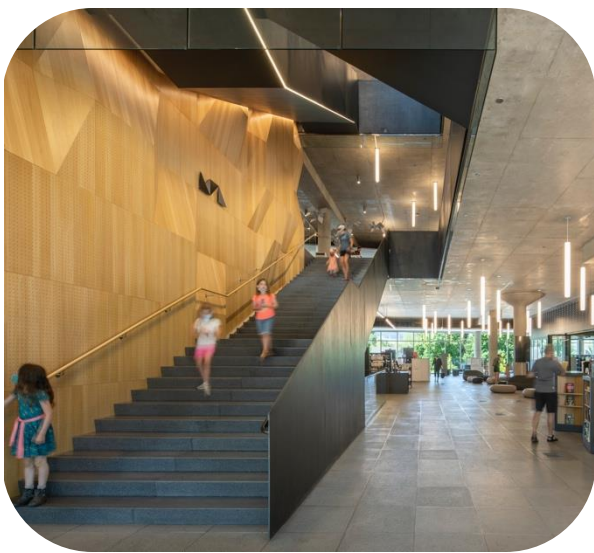
(rendering of sensory room responding to focus group input)

designing for discovery | Missoula Public Library + Culture House (Montana)



🔍 **DISCOVERY** | inspiring delight while fostering stewardship




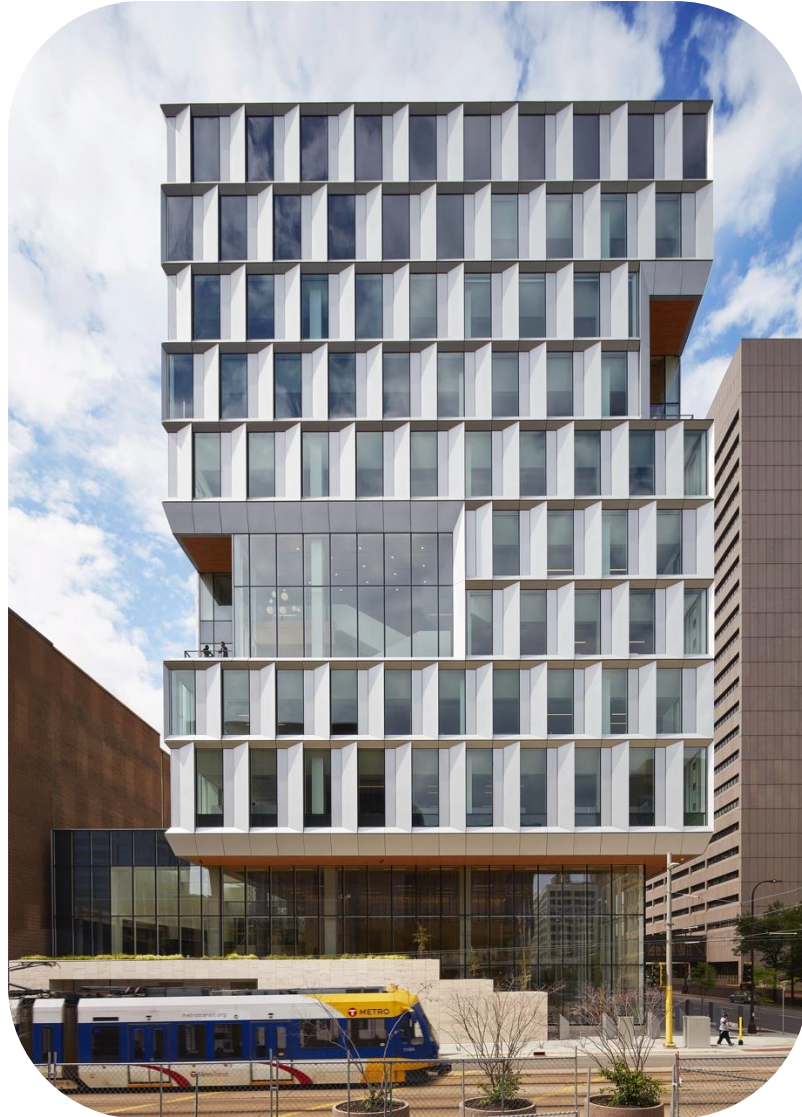


get in
touch

traci@msrdesign.com

1+612.991.7764

 @tracilesneski



MSRDesign