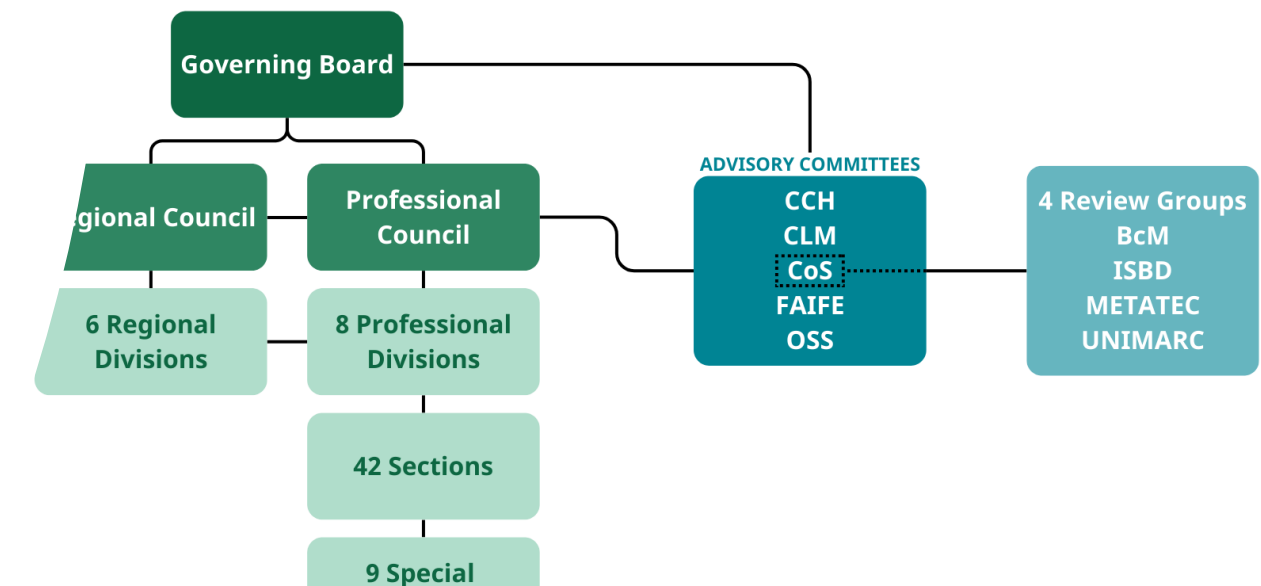


IFLA Nominations 2025

**Nomination Webinars 27, 28, 29
January 2025**



IFLA: How we are organised

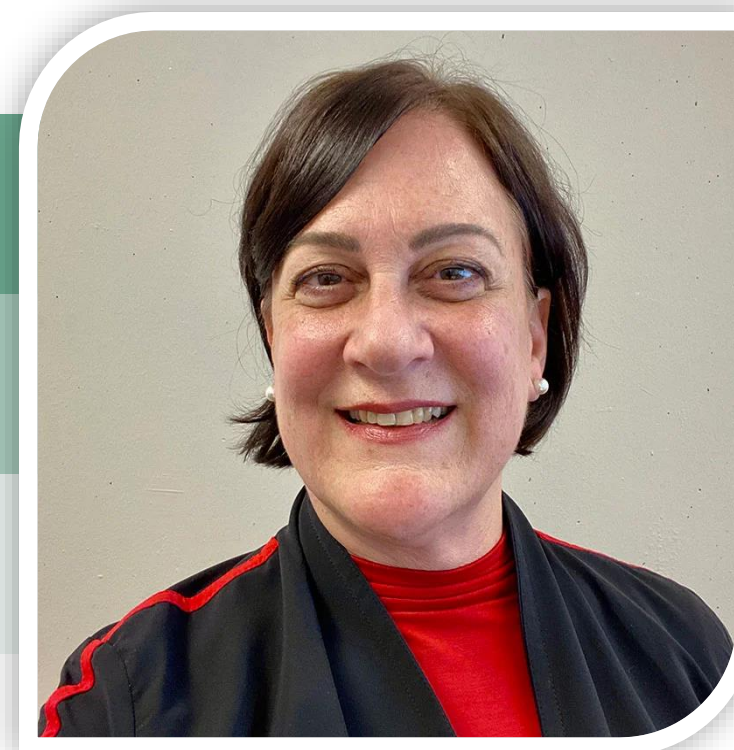


SPEAKERS



Helen Mandl

IFLA Deputy Secretary General



Lidia Putziger

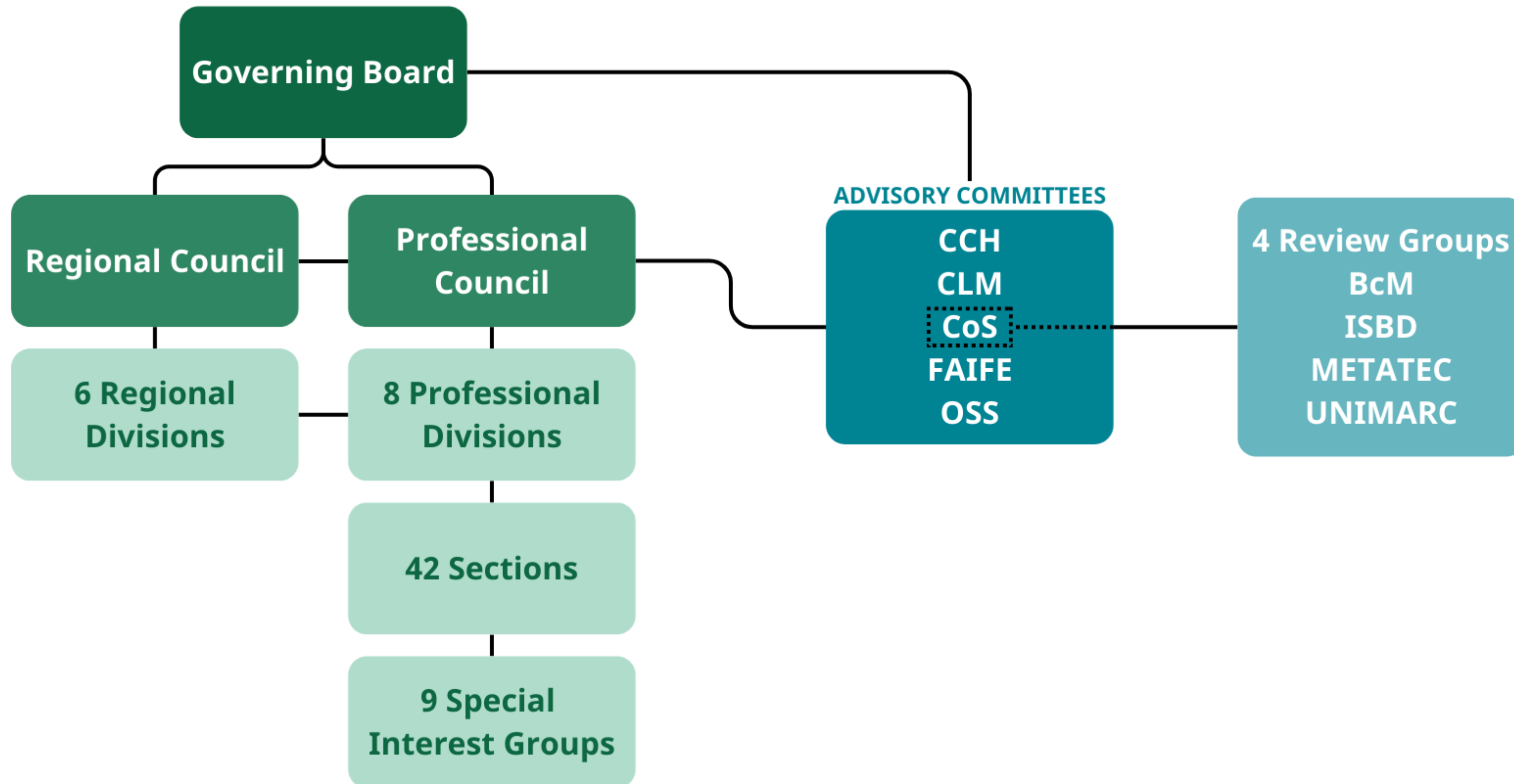
Operations Manager

IFLA 2025 Elections Nominations Process

- 1. Introductions**
- 2. IFLA Committee Structure**
- 3. Timeline**
- 4. Nominators and Nominees**
- 5. Whats on offer**
- 6. Nomination Platform**
- 7. Resources and information**
- 8. Your Questions**

*** Some slides with thanks to IFLA MLAS**

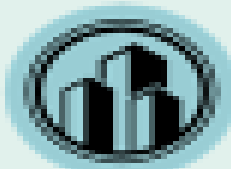
IFLA: How we are organised



IFLA Membership

IFLA Members

have nomination and voting rights



National Associations

National and other Institutions



International Associations

Other Associations

Sign up to
become an IFLA
Member or
Affiliate today

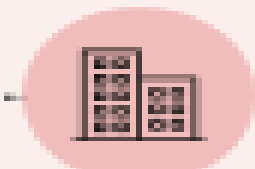
IFLA Affiliates

not members but do have nomination
and some voting rights!



Personal Affiliates

Student Affiliates



Institution and Association
Affiliates

*An IFLA Member is **not** the same as an
IFLA Standing Committee Member.*

*IFLA Members pay a membership fee -
IFLA Standing Committee Members are
elected.*

*IFLA Standing Committee Members and
other volunteers are Affiliates **if** they
pay a membership fee to IFLA.*

IFLA 2025 Nomination and Election Timeline

Nominations open 13 January 2025, Monday

Nominations close 24 February 2025, Monday, 17:00 CET

Elections open 17 March 2025, Monday

Elections close 14 April 2025, Wednesday, 17:00 CEST

Election results announced 05 May 2025, Monday

IFLA 2025 - Nominations & Elections

OFFICER NOMINATIONS & ELECTIONS

IFLA ELECTIONS

March 17 – May 05, 2025

June and July 2025

TRANSITION

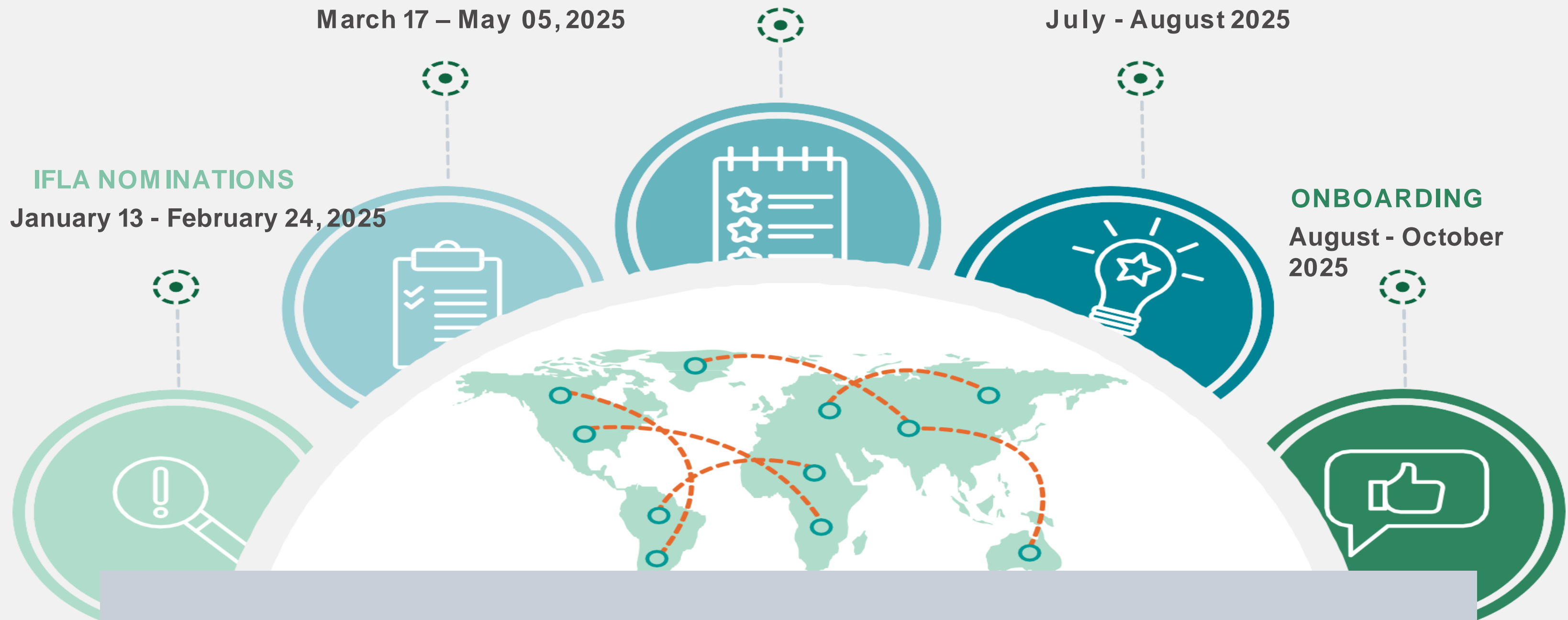
July - August 2025

ONBOARDING

August - October
2025

IFLA NOMINATIONS

January 13 - February 24, 2025



Definitions

NOMINATOR

A **nominator** is an association, institution, individual affiliate or Honorary Fellow of IFLA with the right to nominate (propose) candidates for IFLA committees. They have to fill in a nominator form and ensure their nominee fills in the nominee form.

NOMINEE

A **nominee** is the individual who is nominated for a position. They have to fill in a nominee form including a motivation statement.

NOMINATION

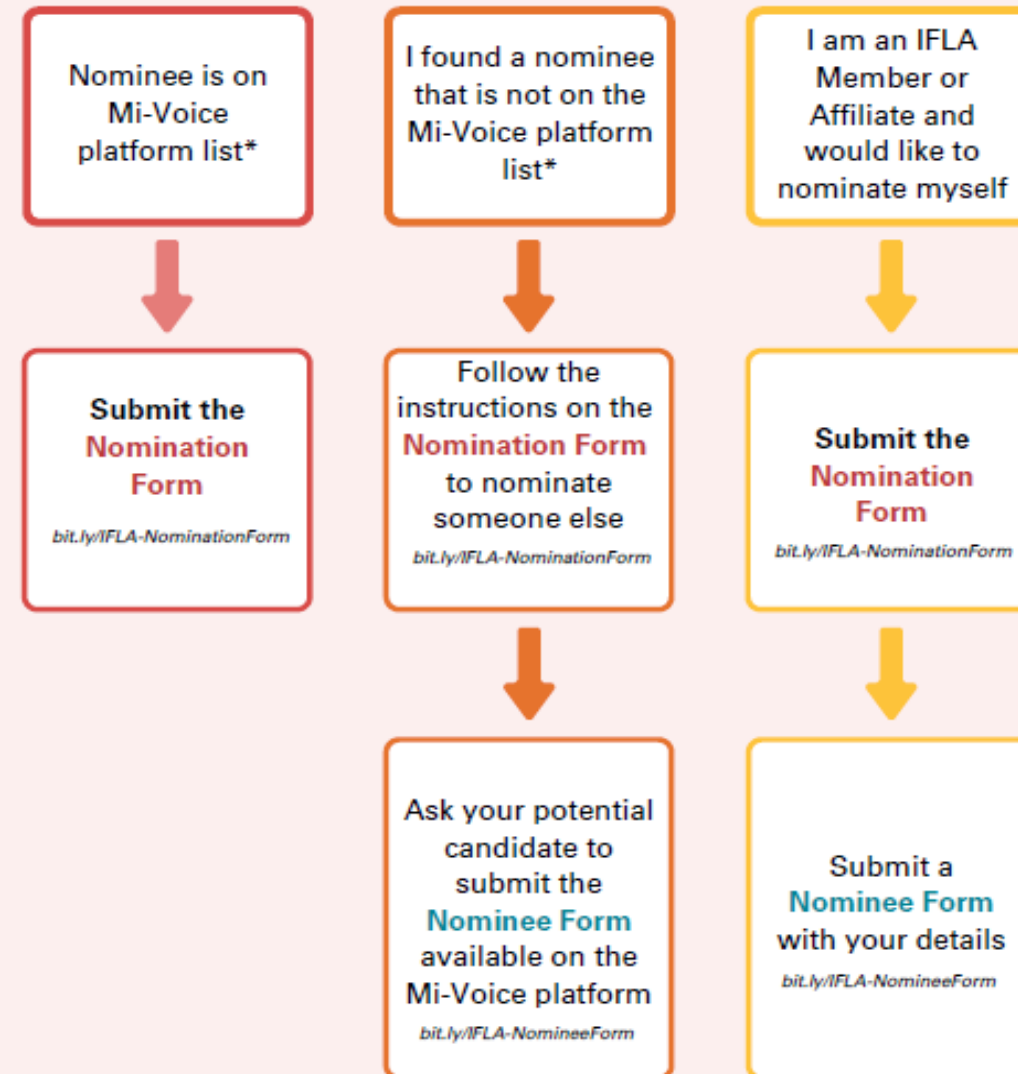
A **nomination** is therefore when a nominator proposes a candidate. This is only considered valid when there is a match between a nomination (or nominations) submitted by a nominator (IFLA Association or Institution, Honorary Fellow or an Affiliate) and a nominee form submitted by an individual wishing to stand for an IFLA position or committee.

IFLA Elections 2025

How to ensure a **valid** nomination

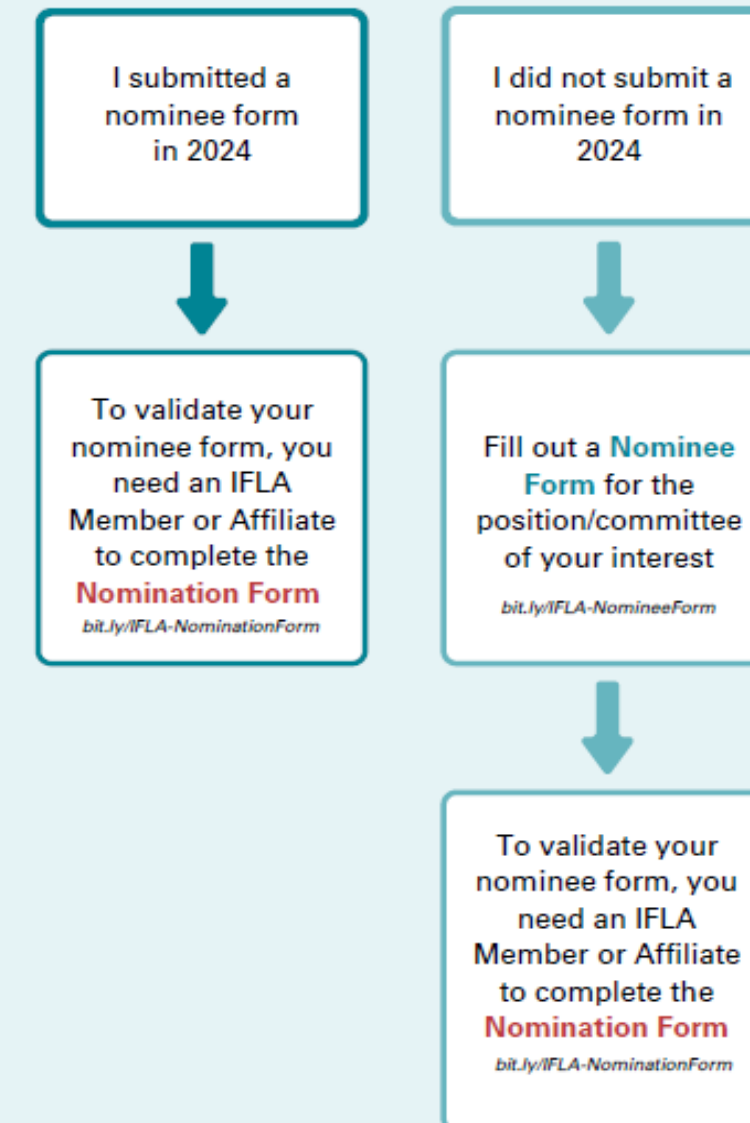
For all positions and committees, except
Special Interest Groups
bit.ly/SIGsForm

Nominator



*The Mi-Voice Platform List can be found at the bottom of the **Nomination Form** Page. bit.ly/IFLA-NominationForm

Nominee



Valid Nomination

IFLA Elections - Who can
Nominate and Vote for What?

IFLA Elections - Who can Nominate and Vote for What?		Nominators & voters	Honorary Fellows	National Associations	International Associations	Other Associations	Association Affiliates	Institutions	Institutional Sub-units	One-person Library Centres	School Libraries	Personal Affiliates	Student Affiliates	New Graduate Affiliates	Non-salaried Affiliates
Positions															
President-Elect	Nominate	✓	✓	✓	✓	✓	✓	✓	✓	✓	✓	✓	✓	✓	✓
	Vote	✓	✓	✓	✓	✗	✓	✗	✗	✗	✗	✗	✗	✗	✗
Treasurer	Nominate	✓	✓	✓	✓	✓	✓	✓	✓	✓	✓	✓	✓	✓	✓
	Vote	✓	✓	✓	✓	✗	✓	✗	✗	✗	✗	✗	✗	✗	✗
Members-at-Large of the Governing Board	Nominate	✓	✓	✓	✓	✓	✓	✓	✓	✓	✓	✓	✓	✓	✓
	Vote	✓	✓	✓	✓	✗	✓	✗	✗	✗	✗	✗	✗	✗	✗
Chairs of Advisory Committees	Nominate	✗	✓	✓	✗	✗	✗	✗	✗	✗	✗	✗	✗	✗	✗
	Vote														
Members of Advisory Committees	Nominate	✓	✓	✓	✓	✗	✓	✗	✗	✗	✗	✗	✗	✗	✗
	Vote														
Members of Review Groups	Nominate	✓	✓	✓	✓	✗	✓	✗	✗	✗	✗	✗	✗	✗	✗
	Vote														
Chair of the Regional Council	Nominate	✓	✓	✓	✓	✓	✓	✓	✓	✓	✓	✓	✓	✓	✓
	Vote	✓	✓	✓	✓	✓	✓	✓	✓	✓	✓	✓	✓	✓	✓
Members of Registered Regional Division	Nominate	✓	✓	✓	✓	✓	✓	✓	✓	✓	✓	✓	✓	✓	✓
	Vote	✓	✓	✓	✓	✓	✓	✓	✓	✓	✓	✓	✓	✓	✓
Standing Committee Members of Registered Professional Sections	Nominate	✓	✓	✓	✓	✓	✓	✓	✓	✓	✓	✓	✓	✓	✓
	Vote	✓	✓	✓	✓	✓	✓	✓	✓	✓	✓	✓	✓	✓	✓

Once the nominations are received:
* Chairs and Members of Advisory Committees are appointed by the Governing Board.
* Members of Review Groups are appointed by the Advisory Committee on Standards.

Professional Divisions

Division A	Division B	Division C	Division D	Division E	Division F	Division G	Division H
National Libraries	Government Libries	CPDWL*	Academic and Research Libraries	School Libraries	Art Libraries	Health and Biosciences Libraries	Bibliography
Public Libraries	Library and Research Services for Parliaments	Education and Training	Science and Technology Libraries	Indigenous Matters	Document Delivery and Resource Sharing	Social Science Libraries	Cataloguing
Metropolitan Libraries	Law Libraries	Library Theory and Research	Libraries Serving People with Print Disabilities	Information Literacy	Acquisition and Collection Development	Serials and Other Continuing	Information Technology
Library Buildings and Equipment	Gov Info and Offical Publications	Management of Library Associations	Audiovisual and Multimedia	Libraries for Children and Young Adults	Preservation and Conservation	Environment, Sustainability and Libraries	Knowledge Management
Library Services to Multicultural Populations	Access to Information Network - Africa SIG	LIS Education in Developing Countries SIG	Library Services to People with Special Needs	Literacy and Reading	Rare Books and Special Collections	News Media	Subject Analysis and Access
Local History and Genealogy	Women, Information and Libraries SIG	New Professionals SIG	Management and Marketing	Reference and Information Services	LGBTQ Users SIG	Digital Humanities/ Digital Scholarship SIG	Statistics and Evaluation
National Organisations and International Relations SIG	<div> <div></div> <div>Sections</div> </div> <div> <div></div> <div>Special Interest Groups</div> </div> <div>SIG - Special Interest Group</div>		Library Publishing SIG	Library History SIG	Religions: Libraries and Dialogue SIG	Evidence for Global and Disaster Health SIG	Big Data SIG

*Continuing Professional Development and Workplace Learning

Professional Section Vacancies

Section names	Continuing members (2023-2027)	Vacancies
Academic and Research Libraries	7	13
Acquisition and Collection Development	12	8
Art Libraries	11	9
Audiovisual and Multimedia	11	9
Bibliography	9	11
Cataloguing	11	9
Continuing Professional Development & Workplace Learning	16	4
Document Delivery and Resource Sharing	5	15
Education and Training	11	9
Environment, Sustainability and Libraries	6	14
Equitable and Accessible Library Services	6	14
Government Information and Official Publications	12	8
Government Libraries	7	13
Health and Biosciences Libraries	8	12
Indigenous Matters	5	15
Information Literacy	14	6
Information Technology	9	11
Knowledge Management	18	2
Law Libraries	9	11
Libraries for Children and Young Adults	12	8

Section names	Continuing members (2023-2027)	Vacancies
Libraries Serving Persons with Print Disabilities	8	12
Library and Research Services for Parliaments	11	9
Library Buildings and Equipment	13	7
Library Services to Multicultural Populations	8	12
Library Theory and Research	9	11
Literacy and Reading	11	9
Local History and Genealogy	6	14
Management and Marketing	17	3
Management of Library Associations	15	5
Metropolitan Libraries	5	15
National Libraries	9	11
News Media	9	11
Preservation and Conservation	8	12
Public Libraries	9	11
Rare Books and Special Collections	11	9
Reference and Information Services	6	14
School Libraries	5	15
Science and Technology Libraries	9	11
Serials and Other Continuing Resources	10	10
Social Science Libraries	7	13
Statistics and Evaluation	10	10
Subject Analysis and Access	7	13

Requirements for Nomination and Election

Position	Term of Office (years)	Nominations Required	Candidates Statement & Nominee Consent Form	Who can nominate	Who can vote
President-elect	2	10	1,000 words	Members and Affiliates	Members
Treasurer	2	5	500 words	Members and Affiliates	Members
Members-at-Large of the Governing Board (5 positions)	2 (Renewable once by re-election)	5	500 words	Members and Affiliates	Members
Chairs of Professional Division Committees (8 positions, 1 on each Prof Division)	2	3	300 words	All members of the Professional Section Standing Committees	Officers of the Professional Section Standing Committees
Members of Professional Section Standing Committees (42 Sections) Number of vacancies vary in each Section (maximum 20 members)	4 (renewable once by re-election)	1	200 words	Registered Members and Affiliates, who are registered as members of each Professional Section.	Members and Affiliates vote for their registered Sections
Convenors of Special Interest Groups (12 Positions)	2 (renewable once)	1	300 words	Members of each Special Interest Group, including self-nomination	Members of SIG
Members of Special Interest Groups (maximum 9 members each SIG)	2 (renewable once)	1	200 words	Self-nomination	Appointed by the sponsoring Section Standing Committee(s)



International
Federation of
Library
Associations and Institutions

Welcome to the IFLA Elections 2025 nomination platform

Scroll down for nominations for Chair of the Professional Council and Chairs of the IFLA Professional Division Committees.

Nominators

If you would like to nominate a candidate for the IFLA Elections, please click the button below to complete the online nomination form. **Only IFLA members and Affiliates may nominate.**

The deadline for nominating candidates is Monday, 24 February 2025, 17:00 CET.

[Click here to submit a nomination](#)

Nominees

If you did not complete a pre-nomination, you now have the opportunity to submit a nominee form.

To find out more about the available positions and the election process, please [refer to the IFLA Election webpages](#) or consult the [Elections 2025 Guide](#).

During the nominations phase, your information will be shared with IFLA members who may use it to determine who they will nominate.

The nomination submission deadline is Monday, 24 February 2025, 17:00 CET.

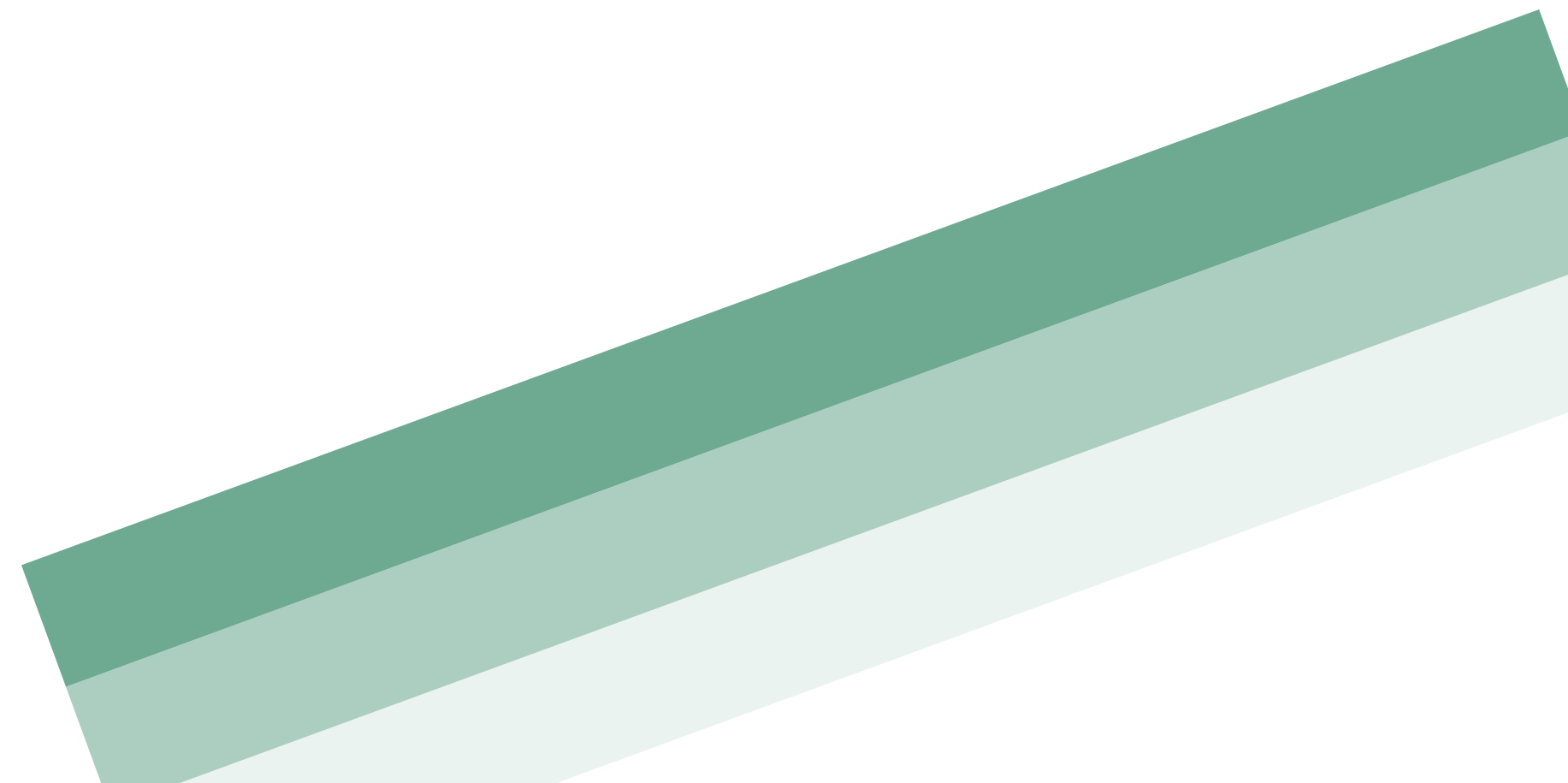
[Click here to submit a Nominee form](#)

LINKS TO IFLA 2025 ELECTIONS / IFLA HQ CONTACTS

- [IFLA Elections Website](#)
- [IFLA Elections 2025 Guide](#)
- [FAQ](#)
- **Nominations and elections process:**
Lidia Putziger – elections@ifla.org

The screenshot displays the IFLA Elections 2025 website. The header includes the IFLA logo, the text "International Federation of Library Associations and Institutions", and a navigation menu with links: WHO WE ARE, WHAT WE DO, NEWS, EVENTS, RESOURCES, JOIN US, SEARCH, and a DONATE button. Below the header is a large image of a hand putting a ballot into a box. The main content area features a sidebar on the left with a green header "Elections 2025" and links to Guide, Nominations Platform, Become an IFLA Volunteer, Section vacancies, FAQs, Timeline, and Past elections results. The main content area has a green header "IFLA Elections 2025" and a flowchart titled "How to ensure a valid nomination". The flowchart is divided into two columns: "Nominator" and "Nominee". The "Nominator" column shows three paths: 1. Nominee is on Mi-Voice platform list* -> Submit the Nomination Form -> Ask your potential candidate to submit the Nominee Form. 2. Found a nominee that is not on the Mi-Voice platform list* -> Follow the instructions on the Nomination Form to nominate someone else -> Submit a Nominee Form with your details. 3. I am an IFLA Member or Affiliate and would like to nominate myself -> Submit the Nomination Form -> Submit a Nominee Form with your details. The "Nominee" column shows two paths: 1. I submitted a nominee form in 2024 -> To validate your nominee form, you need an IFLA Member or Affiliate to complete the Nomination Form. 2. I did not submit a nominee form in 2024 -> Fill out a Nominee Form for the position/committee of your interest -> To validate your nominee form, you need an IFLA Member or Affiliate to complete the Nomination Form.

YOUR QUESTIONS



THANK YOU

And goodbye.

